

The Waterville - Winslow Compromise Plan and a Comparison to Previous Congressional Plan

This Map shows the Congressional District Plan that was settled on during meetings on September 27, 2011 in Augusta.

According to the Portland Press Herald, eleven communities will move from the 1st District to the 2nd District: Albion, Unity Township, Sidney, Belgrade, Rome, Vienna, Mount Vernon, West Gardiner, Gardiner, Monmouth and Randolph.

Two towns, Waterville and Winslow, will be moved from the 2nd Congressional District to the 1st District.

The table of statistics compares the demographic and voter profiles of the existing 112th Congressional district and the Compromise plan approved by Maine legislators on Sept. 27, 2011.

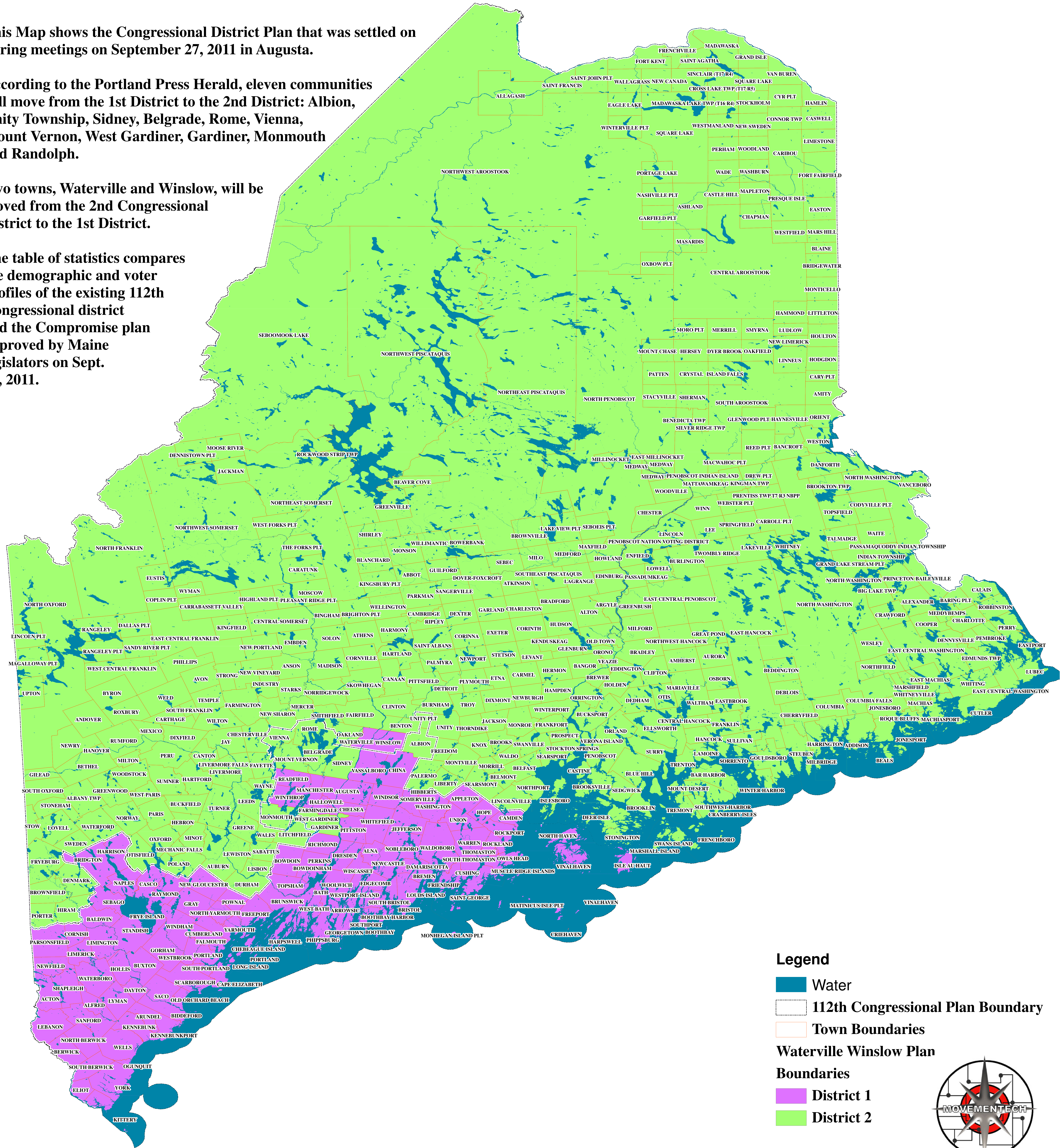


Table of Statistics

	Pop	dev%	Voting Age Pop	VA Pop %	Minority	Min. %	VA Minority	VA Min. %	Reg Dems	% Reg Dems	Reg Rep	% Reg Rep	Reg Ind.	Reg Ind.%	Registered Votes	Cutler Votes	% Cutler	Lepage Votes	% Lepage	Mitchell Votes	Total Votes	Pct Voters Turnout
Existing Plan Dist One	668,515	0.65%	529,178	79.16%	39,416	5.90%	25,151	4.75%	166,873	34.00%	133,194	27.14%	173,429	35.33%	490,836	112,799	36.98%	103,265	33.85%	64,990	305,031	62.15%
Compromise Plan Dist 1	664,180	0.00%	526,524	79.27%	40,063	6.03%	25,604	4.86%	166,969	34.34%	129,846	26.71%	171,406	35.26%	486,186	111,065	36.92%	101,255	33.66%	64,807	300,856	61.88%
Existing Plan Dist Two	659,846	-0.65%	524,650	79.51%	34,648	5.25%	21,654	4.13%	147,243	31.50%	134,805	28.84%	169,332	36.22%	467,446	94,448	34.70%	113,622	41.75%	43,564	272,169	58.22%
Compromise Plan Dist 2	664,181	0.00%	527,304	79.39%	34,001	5.12%	21,201	4.02%	143,088	30.57%	134,094	28.65%	167,296	35.74%	468,037	96,182	34.81%	115,632	41.84%	43,747	276,344	59.04%
Ideal Pop	664,180.5														954,223	207,247	37.78%	216,887	39.54%		548,513	57.48%

* Note that the actual vote tallies for Governor are slightly higher than are recorded here because of changes in names of incorporated Maine towns from October 2010 when the election was held, to August 2011 when the latest voter registration data was released and upon which this analysis is based. The final results are Cutler 208,270 (35.9%), LePage 218,065 (37.6%), Total Votes Cast 580,538. This data is from the Maine Secretary of State and the 2010 U.S. Census.